

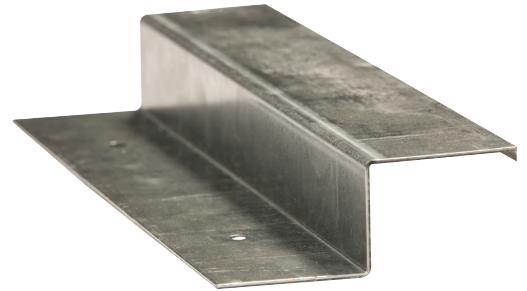
HIGH CAPACITY RAKE, STARTER & EAVE PLATES



Starter Plate



Rake Plate



Eave Plate



DESIGNING SOLUTIONS
FOR TOMORROW

BRS's Superior Seam Technology™ (SST) sets the industry standard for innovation and continuous improvement in standing seam roofing systems. Our Design and Engineering Group has advanced roof system performance with the patented High Capacity Rake, Starter, and Eave Plates – engineered to meet the highest demands of edge/corner zone wind uplift code requirements. Developed to meet edge metal testing protocols, these plates provide unmatched structural integrity, thermal expansion capacity, and wind uplift resistance, making them the benchmark for performance.

INNOVATION

- Engineered to meet extreme edge/corner zone uplift requirements, ensuring superior system integrity.
- Developed to meet the latest edge metal testing protocols for unmatched wind uplift reliability.
- Patented clamping retainer design prevents catastrophic roof loss, offering a significant upgrade over traditional industry parts.
- Expanded thermal cycle movement capability (up to 7") when coupled with BA Series Wind Clips, allowing for ultra long panel runs up to 500'-0" without midpoint pinning or costly rafter stepdowns.

HIGH CAPACITY RAKE, STARTER & EAVE PLATES

DESIGN

- Heavy-duty 16-gauge G-90 galvanized steel construction for durability and secure panel/trim attachment.
- 3/4" horizontal top flange starter plate at the rake/gable allows for drop on panel installation for quicker installs.
- Provides panel alignment adjustments for out of square buildings.
- Extended horizontal 2" flanges (rake/eave plates) for superior fastener engagement and weather-tight performance.
- Pre-punched Eave Plate holes for faster, more precise installation:
 - Rake/Starter Plates: 3/8" x 8-1/4" slots (18" O.C.) with factory installed retainers.
 - Eave Plates: 1/4" round holes (6" O.C.) for optimal uplift performance.
 - Field fastener placement control - fastener required for each hole.
- Available in multiple heights for compatibility with standard (1/2", 1-1/2") and extended (2", 2-1/2", 3") standoff clips, supporting retrofit and new construction.
- Patented design includes "L" shape rake/starter parts - if required.
- Installer-friendly instructional decal ensures correct field placement of retainer part/fasteners.
- Utilizes the same screws as the clips for attachment (no shoulder fasteners)

PERFORMANCE

- Proven increased diaphragm stiffness enhances structural integrity in critical edge/corner zones up to 4x better uplift performance than current utilized designs.
- Eliminates dual fastener inventory - uses the same 1/4-#14 panel clip screws for simplified installation.
- Test values based on loss of thermal cycle serviceability - not catastrophic loss of roof at failure.
- Extended starter plate web depth supports green design initiatives for higher R-values with thicker layered fiberglass systems
- 10' standard lengths for easier handling and alignment on-site, ensuring a straight panel start.
- Third-party tested for design values



The Superior Seam Technology design and engineering meets the more stringent corner/edge zones uplift codes.

