



Instructional Guidelines

scan QR code for an instructional video



SEALED "N" SAFE®
Single Layer

QR CODE



SEALED "N" SAFE®
Double Layer

QR CODE



SEALED "N" SAFE®
Full Cavity

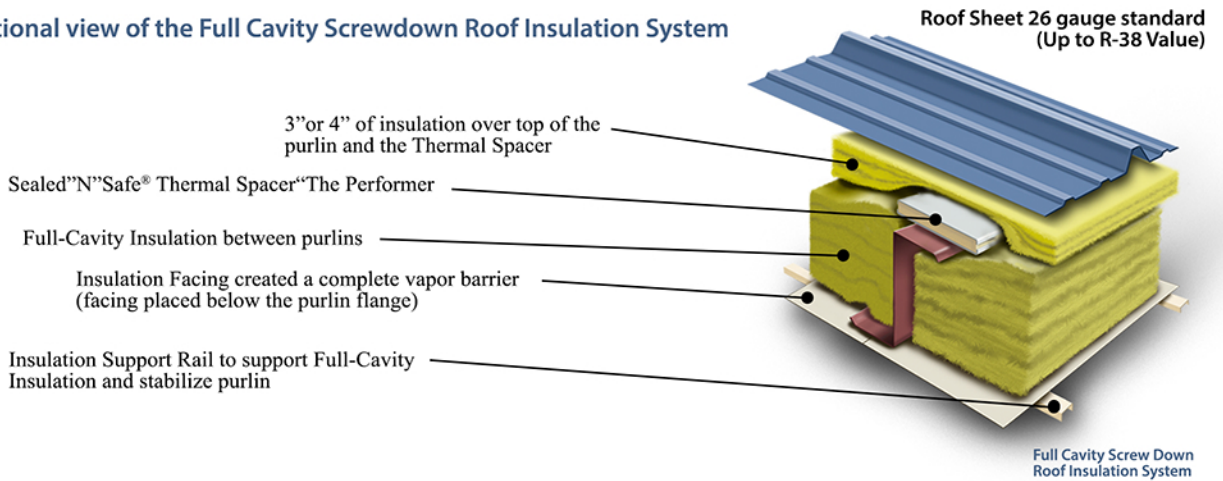
QR CODE

Insulation Rail (if needed, only on Full Cavity Systems or greater)

Our Insulation Rail is 26ga, painted Steel Rail, which is fastened to the bottom of the purlin using #12 x 3/4" SD Screws. It is a very attractive means of not only supporting the added insulation but also supporting the bottom flange of the purlin. It does not induce the tension conditions that are inherent when using banding or strapping to support the insulation. Our insulation support rails are produced in 10 and 12 foot lengths.

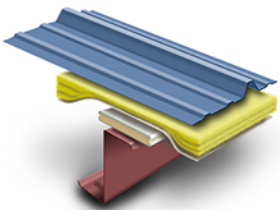
Step 1: Our insulation rail needs to be fastened to the bottom of each purlin using a #12 x 3/4" SD Screw and spaced no more than 2'-6" apart as noted in the picture below.

Cross-sectional view of the Full Cavity Screwdown Roof Insulation System



Thermal Spacer

The preferred installation method is one man in a man-basket installing the SNS® Thermal Spacers ahead of the roofing crew (*option 1*). SNS® Thermal Spacers can also be installed on the go as insulation and roof sheets are installed (*option 2*).



Each thermal spacer comes in six-foot lengths which are the standard widths of two roof sheet panels and the typical width of a metal building insulation roll, making the thermal spacer easy to handle and install.

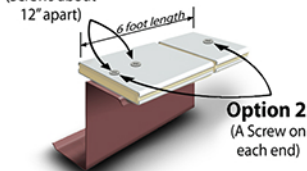
Each thermal spacer comes with two flat-head screws to hold the six-foot thermal spacer in place. (210 flat-head screws will be provided for 100 thermal spacers).

Suggestions:

- When installing the thermal spacers, center it over the flange of the purlin.
- Butt the thermal spacers end to end without added pressure.
- Consider the placement of the flat-head screws through the thermal spacer, so that the SNS® panel fasteners do not conflict with the flat-head screws.
- When installing the insulation blankets, install to industry standards in order to allow for full expansion of fiberglass.

Option 1

(Screws about 12" apart)

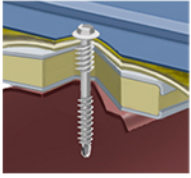


Option 2
(A Screw on each end)

Step 1: Install SNS® Purlin Struts between purlins in needed. (See Instructional guidelines for more information)

Step 2: Thermal spacers are placed and centered over the tops of the purlins and are attached by two #12 flat-head screws. (*Option 1*) Screw the flat-head screw at each end. (*Option 2*) Screw the first flat-head screw at the end and the second screw around 12 inches from the first.

Our SNS® Panel Fastener has been specifically designed to be used with SNS® Thermal Spacer, "The Performer". **Use of this fastener is mandatory as it is key to the performance of the Sealed "N" Safe® Continuous Insulation System.** If pre-drilling the sheeting, use a 1/8" drill bit to maintain the design and the performance of the fastener. Do not use any other fastener. Use of any other fastener will void all warranties.



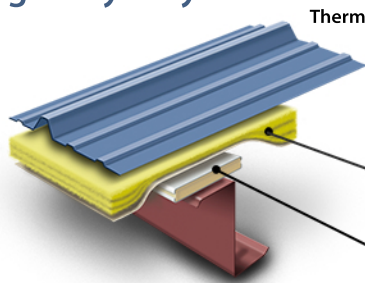
Suggestions:

- If your roof sheet requires more SNS® Panel fasteners than are provided, additional fasteners are available at SNS®.
- A 6 amp 2500 rpm electric screw-gun will be needed with a depth locating nosepiece. (See fasteners installation instructions)

Once the insulation blanket and the roof sheets are placed over the thermal spacer, SNS Panel Fasteners are placed through the roof sheet, insulation, and thermal spacer into the purlin below. The design of the panel fastener creates a "stitch-type" joint, between the roof sheet and the thermal spacers. While fastening the whole assembly tightly to the purlins, this creates a water-tight seal. If pre-drilling the roof sheet, **use a 1/8" drill bit.**

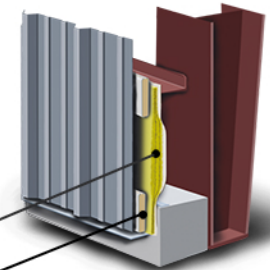
The fastening process works much like a typical screw-down roof. The only additional step is to set the thermal spacer in place with two flat-head screws, then use the SNS® Panel Fastener to screw down the roof sheeting.

Single Layer System



Maximum up to 4" insulation under the roof panel
Over 4" of insulation over the purlin
Eliminates "Oil Can" effect

Thermal Spacer over insulation



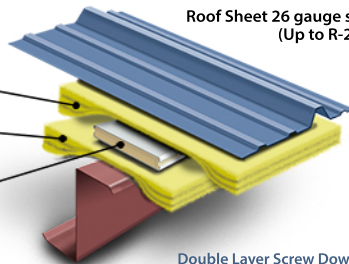
Single Layer Screw Down Roof Insulation System

Double Layer System

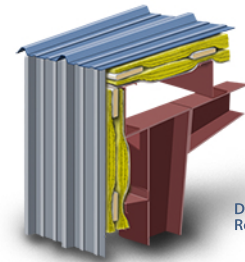


3" of insulation over top of the Thermal Spacer
3" of insulation over the top of the purlin and under the Thermal Spacer

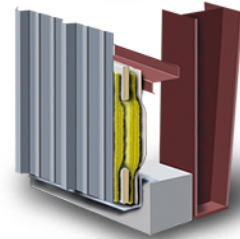
Sealed "N" Safe® Thermal Spacer "The Performer"



Double Layer Screw Down Roof Insulation System

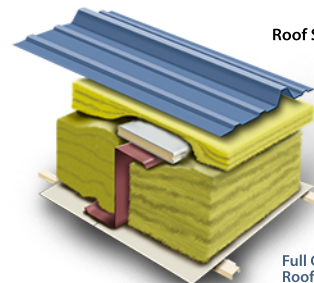


Double Layer Screw Down Roof & Wall Insulation System



Double Layer Screw Down Wall Insulation System

Full Cavity System



Full Cavity Screw Down Roof Insulation System

When attaching the Thermal Spacer to the purlin, be sure to apply pressure to the Thermal Spacer so that the Thermal Spacer is snug-tight to the purlin using the flat-head screws. Do not compress or dimple the Thermal Spacer.

call today:
888-340-4767

www.sealednsafe.com